

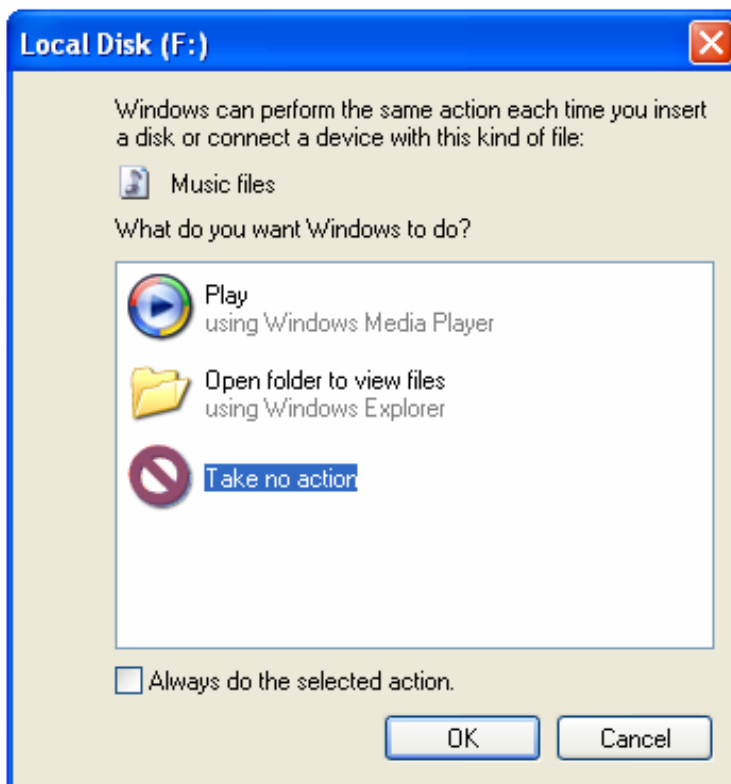
# How to Format an External Hard Drive to make it work with the PS3

## Introduction

The Playstation 3 is only capable, for now, to run hard drives which are formatted on the format "FAT32". Any External Hard Drive which is formatted with format "NTFS" will not be compatible with the PS3. This tutorial will help you to format your External Hard Drive on the format which the PS3 accepts. Before you do anything copy all the data inside your HDD to an internal PC HDD since in this process everything inside your HDD will be lost.

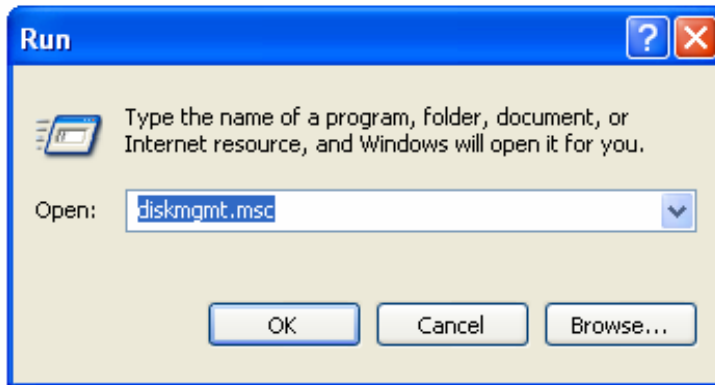
## Steps

1. Connect your Hard Disk Drive to your PC through USB or Firewire.
2. After you have connected your HDD to your PC a window similar to this one should appear:

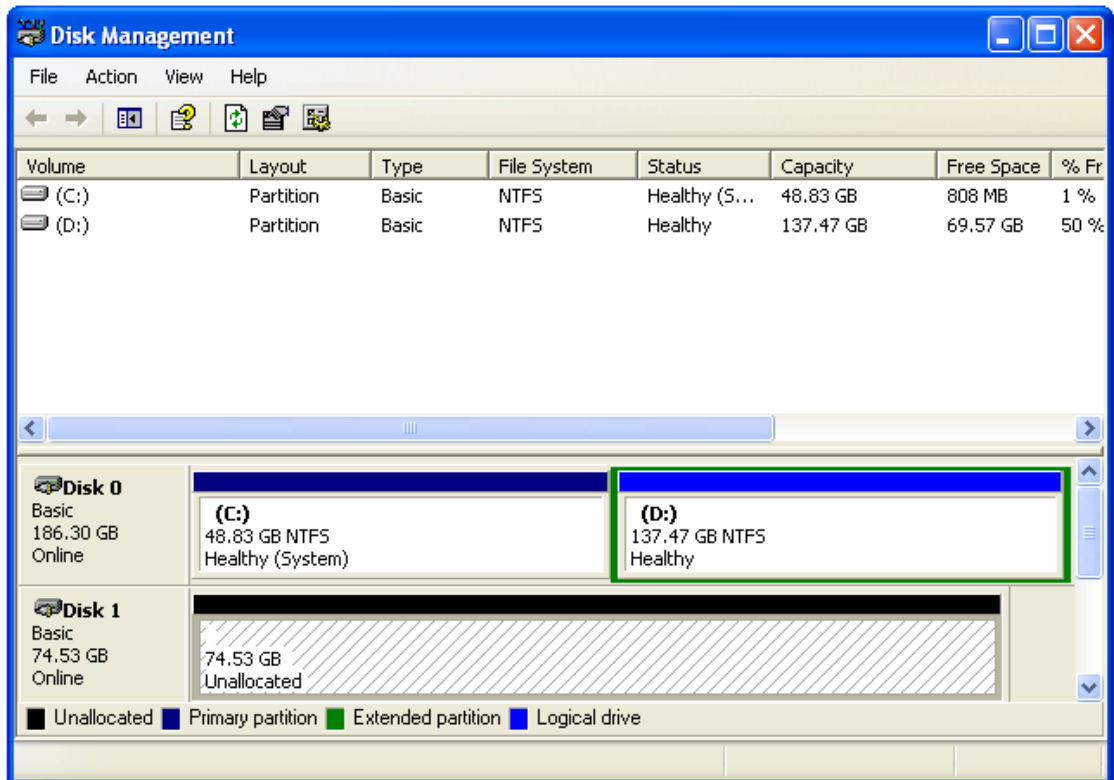


Click "Take no action" and then click OK.

3. Click Start menu, select run and then on the "Run" window enter "diskmgmt.msc".

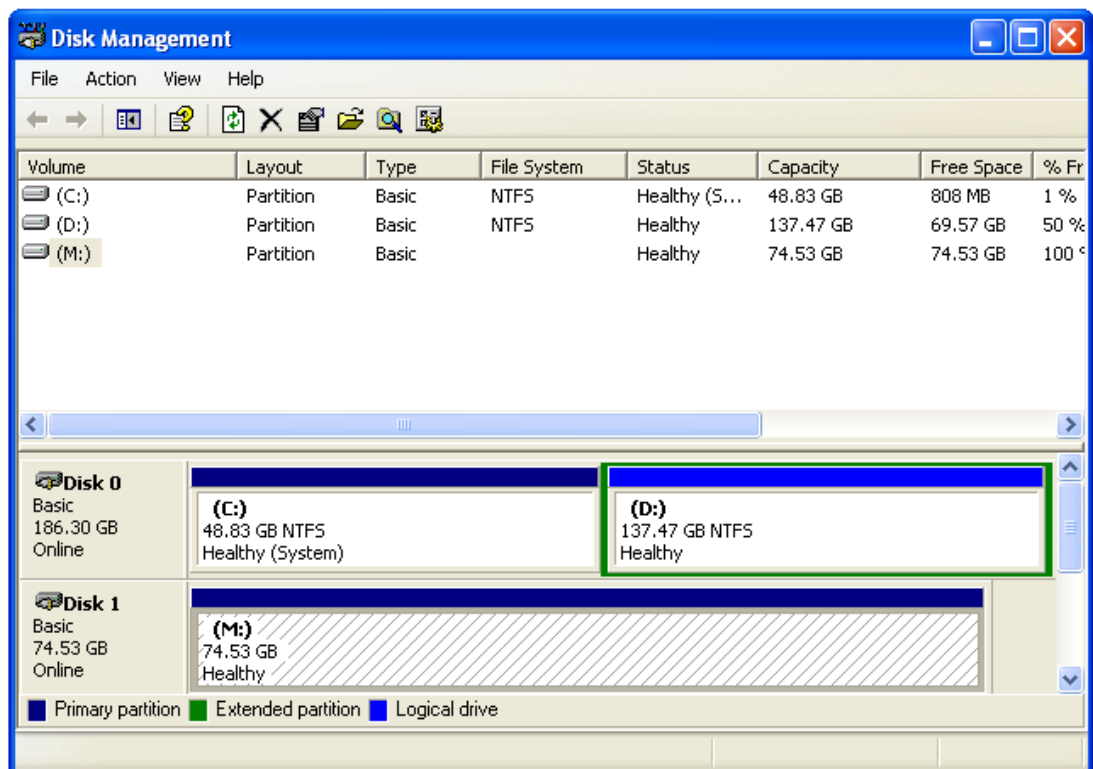


4. If it asks you to initialise the disk, make sure you select a Basic disk, as opposed to a Dynamic.
5. Now you should see this:



6. If you already have a partition then the thick black line should be Blue and instead of it saying Unallocated below the HDD size it should say Healthy. If this is the case then right click on the big rectangle and select "Delete Partition...". However, if you don't have a partition then just skip this step and follow with the next one.
7. Now click on the big rectangle with the diagonal grey lines on it and select New Partition.

8. A wizard will open. Click next.
9. Select Primary Partition and then click next.
10. Enter the maximum size for the partition size (just make the box number be the same number than the number which is after "Maximum disk space on megabytes (mb): xxxxx". Xxxxx represents the number. Click next.
11. Click on "Assign the following drive letter..." and then choose drive letter "M". Click next.
12. Select "Do not format this partition" and then click next.
13. A summary of your options should appear, click Finish.
14. Something similar to this should appear:



15. Now download this:  
<http://www.ridgecrop.demon.co.uk/download/fat32format.zip>
16. Extract it to C:/ which is the root of your C:/ Drive.
17. Click start, then run and the type CMD.
18. On the black window that just appeared type "CD /D c:\"
19. Then type "fat32format m:"

20. This should be displayed " Warning ALL data on drive 'm' will be lost irretrievably, are you sure (y/n) ". Type "y".
21. Now, there should be a lot of script which means this was successful. It should take 4 seconds per Terabyte so it will be pretty fast.
22. Now inside your newly formatted HDD create folders named "Music", "Video". Get inside them whatever you want (obviously music will go into Music directory and Video will go into Video directory).
23. You are ready to disconnect your HDD from your computer and connect it to your PS3.

Thanks to:

<http://www.ridgecrop.demon.co.uk/index.htm?fat32format.htm>

Guide by **ramjo\_frlim/Adaidis/Bullystic**